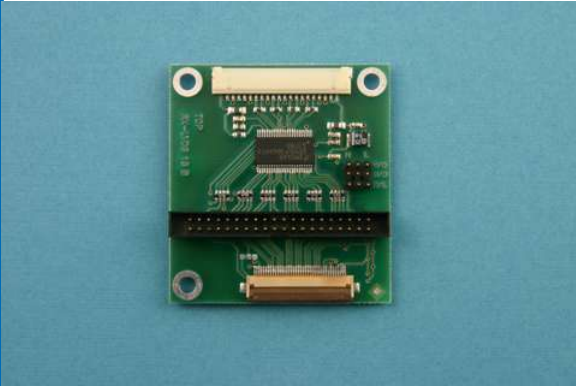


RX-LVDS-18

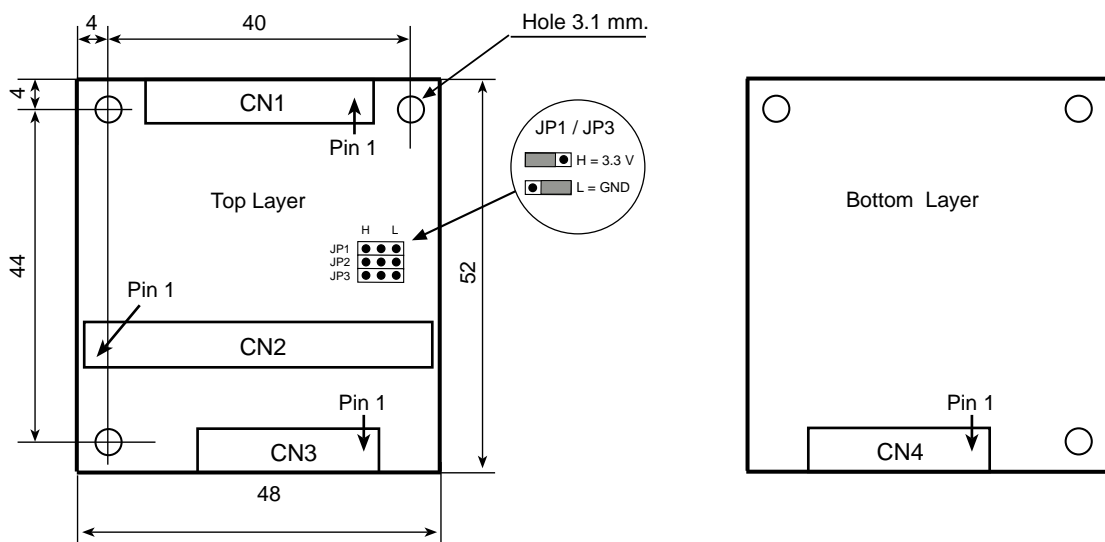


RX-LVDS-18

LVDS 18 Bit to TTL adapter card

Version	Output Connector		
	CN2	CN3	CN4
RX-LVDS-18-EVB	•	•	•
RX-LVDS-18-Z33			•
RX-LVDS-18-Z40		•	
RX-LVDS-18-T40	•		

*Note: By default, the RX-LVDS-18 card supports 3.3 Volt.
If the panel to be used support 5 volts, please contact your distributor.*



Input - Output

CN1 - Input LVDS single channel

PIN	SYMBOL	PIN	SYMBOL
1	PNL PWR	11	A2 -
2	PNL PWR	12	A2 +
3	GND	13	GND
4	GND	14	CLK1 -
5	A0 -	15	CLK1 +
6	A0 +	16	GND
7	GND	17	NC
8	A1 -	18	NC
9	A1 +	19	GND
10	GND	20	NC

CN2 - Digital Output - IDC 2 x 20

PIN	SIGNAL
1	NC
2	NC
3	ENAB
4	H Sync
5	V Sync
6	CLK
7	GND
8	NC
9	NC
10	RE0
11	RE1
12	GND
13	RE2
14	RE3
15	RE4
16	RE5
17	GND
18	NC
19	NC
20	GE0
21	GE1
22	GND
23	GE2
24	GE3
25	GE4
26	GE5
27	GND
28	NC
29	NC
30	BE0
31	BE1
32	GND
33	BE2
34	BE3
35	BE4
36	BE5
37	GND
38	VCC 3.3
39	VCC 3.3
40	NC

CN3 - Digital Output - ZIF 40 Pin

PIN	SIGNAL
1	VCC 3.3
2	VCC 3.3
3	VCC 3.3
4	VCC 3.3
5	NC
6	ENAB
7	GND
8	CLK
9	GND
10	Sel / JP1
11	GND
12	BE5
13	BE4
14	BE3
15	GND
16	BE2
17	BE1
18	BE0
19	GND
20	GE5
21	GE4
22	GE3
23	GND
24	GE2
25	GE1
26	GE0
27	GND
28	RE5
29	RE4
30	RE3
31	GND
32	RE2
33	RE1
34	RE0
35	NC
36	GND
37	GND
38	CLK
39	GND
40	GND

CN4 - Digital Output - ZIF 33 Pin

PIN	SIGNAL
1	GND
2	CLK
3	H Sync
4	V Sync
5	GND
6	RE0
7	RE1
8	RE2
9	RE3
10	RE4
11	RE5
12	GND
13	GE0
14	GE1
15	GE2
16	GE3
17	GE4
18	GE5
19	GND
20	BE0
21	BE1
22	BE2
23	BE3
24	BE4
25	BE5
26	GND
27	ENAB
28	VCC 3.3
29	VCC 3.3
30	Sel / JP3
31	Sel / JP2
32	Sel / JP1
33	GND