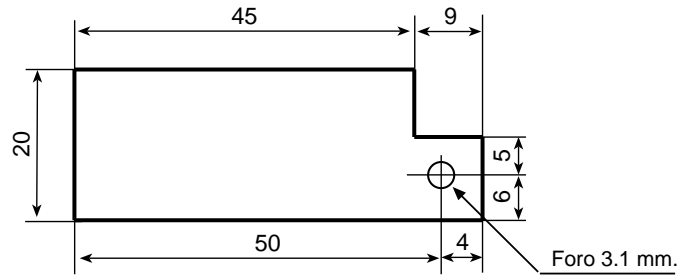
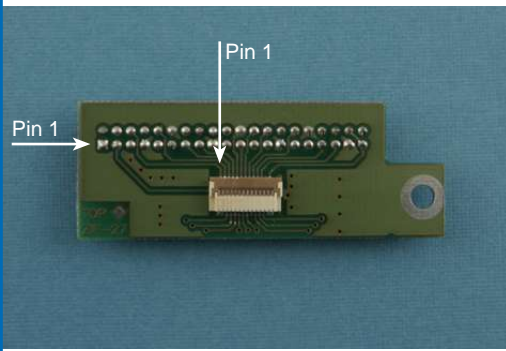


### EPX-AD-ZIF27.Y3



Signal Cable **EPX-AD-ZIF.Y3**

Housing pitch 2mm. 2x20 Pins	Signal	ZIF Header P. 0.3 mm. - 27 Pins
1	N.C.	
2	N.C.	
3	ENAB	24
4	N.C.	
5	N.C.	
6	CLK	2
7	Bus GND	
8	N.C.	
9	N.C.	
10	RE0	4
11	RE1	5
12	Bus GND	
13	RE2	6
14	RE3	7
15	RE4	8
16	RE5	9
17	Bus GND	
18	N.C.	
19	N.C.	
20	GE0	11
21	GE1	12
22	Bus GND	
23	GE2	13
24	GE3	14
25	GE4	15
26	GE5	16
27	Bus GND	
28	N.C.	
29	N.C.	
30	BE0	18
31	BE1	19
32	Bus GND	
33	BE2	20
34	BE3	21
35	BE4	22
36	BE5	23
37	Bus GND	
38	Bus VCC	
39	Bus VCC	
40	N.C.	
	Bus VCC	25, 26, 27
	Bus GND	1, 3, 10, 17

Included ZIF cable 27 pos. lenght 130 mm.

The photos are purely indicative of the model and the connectors polarization.